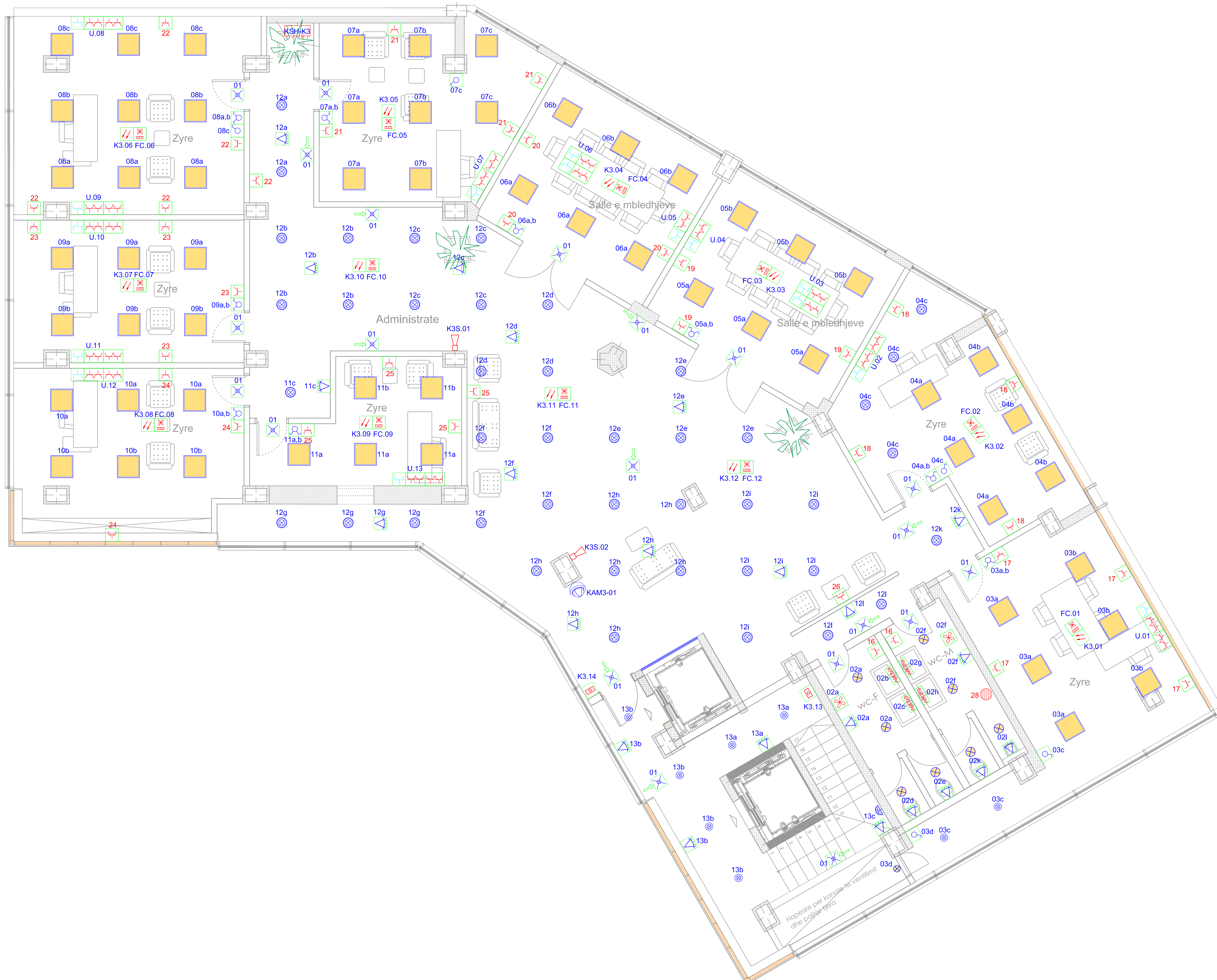


SIMBOLET

	KUADRO SHPERNDARESE DISTRIBUTION BOARD
	SHUKO PRIZA NJË FISHE 230V/16A SOCKET OUTLET
	SHUKO PRIZA MODULARE 230V/16A MODULAR MULTIPLE SOCKET OUTLET
	SHUKO PRIZA TRIFAZORE 400V/16A THREEPHASE SOCKET OUTLET
	PRIZA MODULARE NE POD MODULAR MULTIPLE SOCKET ON FLOOR
	BOILERI - NXEMSI I UJIT BOILER - WATER HEATER
	VENTILATOR FAN
	FAN KOIL FAN COIL
	KONEKTOR 230V /1N/PE CONNECTOR 230V /1N/PE
	KONEKTOR 400V /3N/PE CONNECTOR 400V /3N/PE
	NDËRPRERËS NJËPOLAR SINGLE POLE SWITCH
	MULTI NDËRPRERËS NJËPOLAR MULTIPOSITION SINGLE POLE SWITCH
	NDËRPRERËS ALTERNATIVE TWO-WAY SINGLE POLE SWITCH
	NDËRPRERËS KRYÇEZOR INTERMEDIATE SWITCH
	DETEKTOR I LLEVIZJES MOTION DETECTOR
	AKU LLAMPE EMERGJENTE EMERGENCY LAMP WITH BATTERY
	TREGUES I RRUGES SE IKJES ESCAPE ROUTE LAMP
	LAMPE FLUORO., 2xT16 -28W, EB, IP65 FLUORESCENT LAMP, 2xT16 -28W, EB, IP65
	LEDVANCE AREA, LED - M600, 42W, ECG LEDVANCE AREA, LED - M600, 42W, ECG
	LED DOWNLIGHT XL, 19W LED DOWNLIGHT XL, 19W
	LED DOWNLIGHT L, 12W LED DOWNLIGHT L, 12W
	LED MONTIM NE MUR, 19W LED WALL MOUNTED, 19W
	LED DOWNLIGHT IP 65, 1x12W LED DOWNLIGHT IP 65, 1x12W
	LED REFLEKTOR A2 MINI, IP 65, 51W, ECG LED FLOODLIGHT A2 MINI, IP 65, 51W, ECG
	PRIZE 2RJ45 - LAN SOCKET 2RJ45 - LAN
	DETEKTOR TYMI I ADRESUAR ADRESSABLE SMOKE DETECTOR
	PIKE MANUALE E ADRESUAR - ME XHAM ADRESSABLE MANUAL CALL-POINT
	SIRENE ALARMJUSE ZJARRI FIRE ALARM SIREN
	IP-DOME - KAMERA, E FIKSUAR IP DOME - CAMERA, FIXED



Sh.p.k. "ALFA"
Objekti i ish BANKOS-it

DAY ENGINEERING
CONSULTING DESIGN
Zyra projektuese për elektrike dhe telekomunikacion
Design office for electrical engineering and telecommunication
Udhëheqësi i projektit:
Adriatik BYTYQI

Inzhinier kryesor i projektit të elektrikes:
Mr. sc. Gani LATIFI, inxh. i el.

Inzhinier i projektit të elektrikes:
Kreshnik BOSHJAKU, bach. i el.

Investitori:
"ALFA" sh.p.k.

Emri i projektit:
Objekti i ish BANKOS-it, Prishtinë

Emri i fletës:
PLANI I INSTALIMEVE
KATI 3

Përbjegesa:
1:50

Data:
Prill 2015

ELEKTRIKA

V.V

Numri i fletës:
E - 05