

## Objekti i ish Bankos-it

Installation : Llogaritjet fotometrike

Project number : 01.Zyre

Customer : Sh.p.k. Buçaj

Processed by : Gani Latifi

Date : 01.12.2013

The following values are based on exact calculations on calibrated lamps, luminaires and their arrangement. In practice, gradual divergences can occur.

Guarantee claims for luminaire data are excluded.

Relux and the luminaire manufacturers accept no liability for consequential damage and damage which is occasioned to the user or to third parties.

## 1 Luminaire data

### 1.1 Siteco, Novaluna® (5MC11674MW)

#### 1.1.1 Data sheet

**Manufacturer: Siteco**

#### **5MC11674MW linear fluorescent luminaire-ceiling recessed Novaluna®**

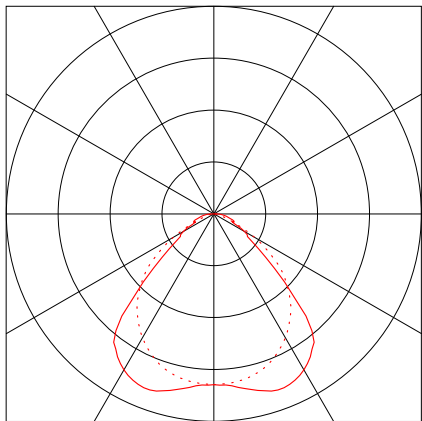
Novaluna®, linear fluorescent luminaire, primary light control with specular reflector, of aluminium, primary anti-glare with High Definition Prismatics (HDP®), primary optical cover: cover panel, of PMMA, prismatic structure, light emission: direct distribution, primary light characteristic: symmetric, installation type: recessed, lay-in mounting, for 4 x T16 14W, control gear: ECG, with terminal, 3-pole, max. 2.5mm<sup>2</sup>, mains connection: 230V, AC, 50Hz, luminaire housing, of sheet steel, coated, pure white, module: M625, length: 623 mm, width: 623 mm, height: 53mm, protection rating (complete): IP20, insulation class (complete): insulation class I (protective earthing), certification: CE, ENEC 10, VDE, protection symbol: F, permissible ambient temperature for indoor applications: <= +25°C, standard: EN 50419, packaging unit: 1 piece,

#### **Luminaire data**

Luminaire efficiency : 81.1%  
Luminaire efficacy : 60.82 lm/W  
Classification : A50 ↓100.0% ↑0.0%  
CIE Flux Codes : 61 89 97 100 81  
UGR 4H 8H (20%, 50%, 70%)  
C0 / C90 : 18.2 / 17.1  
Control gear : ECG  
System power : 64 W  
Length : 623 mm  
Width : 623 mm

#### **Equipped with**

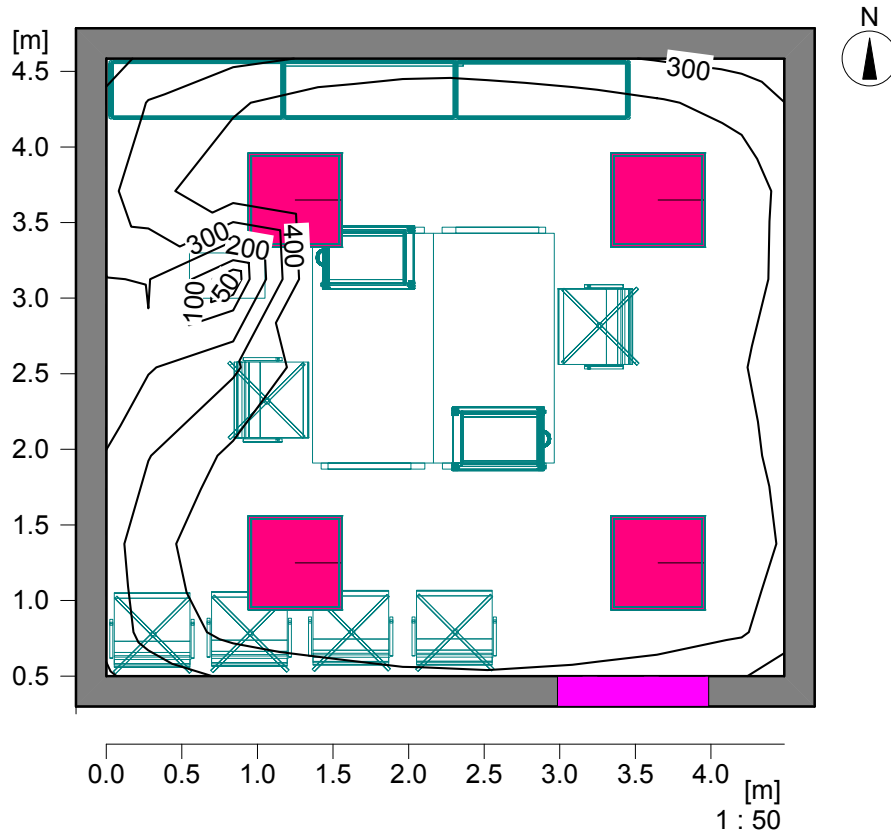
Quantity : 4  
Designation : T16 14W/840  
(Philips)  
Power : 14 W  
Colour :  
Luminous flux : 1200 lm



## 2 Zyre

### 2.1 Calculation results, Zyre

#### 2.1.1 Isolines representation, Reference plane 1.1 (E)

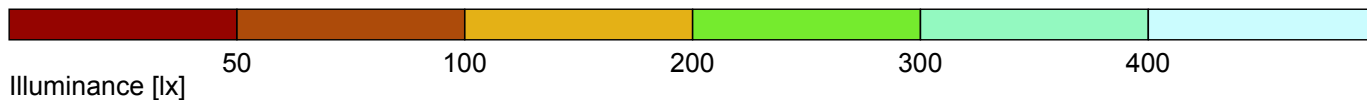
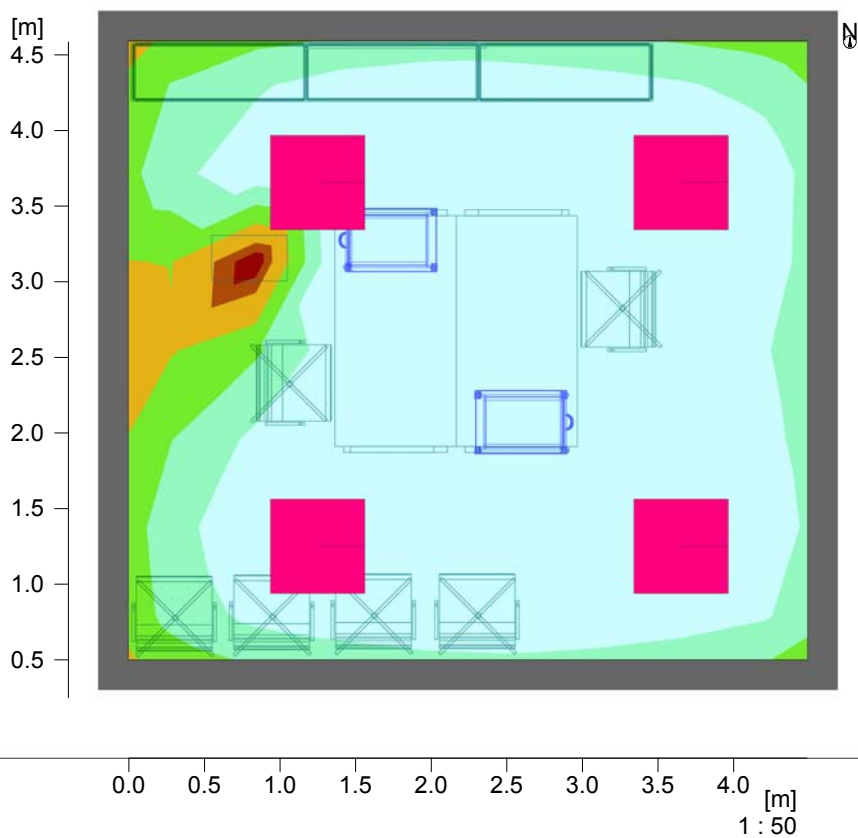


Illuminance [lx]

Height of the reference plane	:	0.95 m
Average illuminance	Eav	: 452 lx
Minimum illuminance	Emin	: 0 lx
Maximum illuminance	Emax	: 569 lx
Uniformity Uo	Emin/Eav	: ---
Diversity Ud	Emin/Emax	: ---

## 2.1 Calculation results, Zyre

### 2.1.2 Pseudo colours, Reference plane 1.1 (E)



Height of the reference plane		: 0.95 m
Average illuminance	Eav	: 452 lx
Minimum illuminance	Emin	: 0 lx
Maximum illuminance	Emax	: 569 lx
Uniformity U <sub>o</sub>	Emin/Eav	: ---
Diversity U <sub>d</sub>	Emin/Emax	: ---

## 2.1 Calculation results, Zyre

### 2.1.3 3D pseudo colours, View 1 (E)

